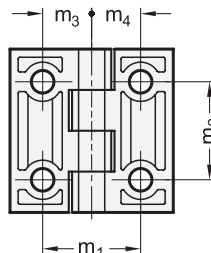
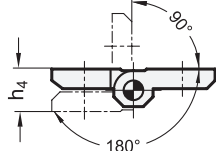
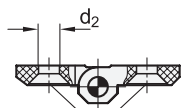


Swivelling range



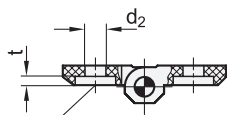
ELESA original design CFM.

Type A



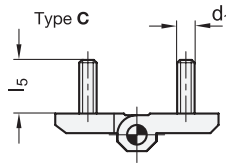
Bores for countersunk screw DIN 7991

Type B

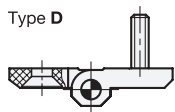


Bores for socket cap screw with washer DIN 6912 / DIN 7984 / ISO 7092

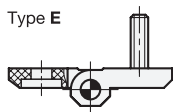
Type C



Type D



Type E



3 Type

- A** 2x2 bores for countersunk screws
- B** 2x2 bores for socket cap screws
- C** 2x2 threaded studs
- D** 2x bores for countersunk screws / 2x threaded studs
- E** 2x bores for socket cap screws / 2x threaded studs

1 2

l_1	l_2	d_1	d_2	d_3	h_1	h_2	h_3	$h_4 \approx$	l_3	l_4	l_5	$m_1 \pm 0,2$	$m_2 \pm 0,2$	m_3	m_4	t
30*	30	-	4,5	2,5	7	3,5	4	8	10,5	10,5	-	18	18	9	9	1,3
40	40	M 5	5,5	4	9	5	5,5	11	14	14	12	25	25	12,5	12,5	1,7
50	50	M 6	6,5	6	11,5	6	6,5	14	18	18	12	30	30	15	15	3
60	60	M 8	8,5	8	15	8	8,5	18	21	21	14,5	36	36	18	18	4
63**	50	-	6,5	6	11,5	6	6,5	14	18	31	-	43	30	15	28	-
76**	50	-	6,5	6	11,5	6	6,5	14	31	31	-	56	30	28	28	-

*only available in black type A and type B **only available in type A

Specification

- Plastic (Polyamide PA)
 - glass fiber reinforced
 - temperature resistant up to 140 °C
 - black, matte
 - white, RAL 9002, matte (only type A)

—
○ WS

- Pin
Stainless Steel AISI 303
- Threaded studs
Steel, nickel plated
- Load rating information → Page 1462
- Plastic characteristics → Page 1483
- Stainless Steel characteristics → Page 1489
- RoHS

4

Information

see also...

- List of hinge types → Page 956 ff.
- Hinges GN 237 (Zinc die casting / St. Steel / Aluminum) → Page 959
- Stainless Steel-Plates with tapped holes GN 2372 → Page 960
- Stainless Steel-Spacer plates GN 2370 → Page 961
- Rubber bumper stops GN 2374 → Page 962

How to order (black)

1 2 3
GN 237.1-40-40-C

- | | |
|---|-------|
| 1 | l_1 |
| 2 | l_2 |
| 3 | Type |

How to order (white)

1 2 3 4
GN 237.1-50-50-A-WS

- | | |
|---|-------|
| 1 | l_1 |
| 2 | l_2 |
| 3 | Type |
| 4 | Color |