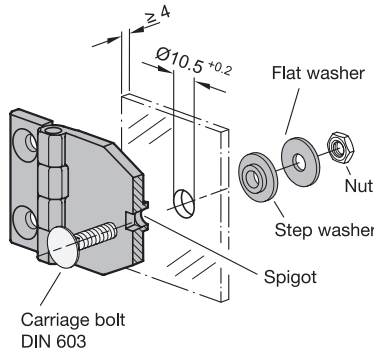
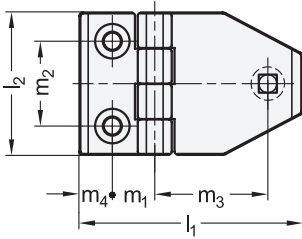
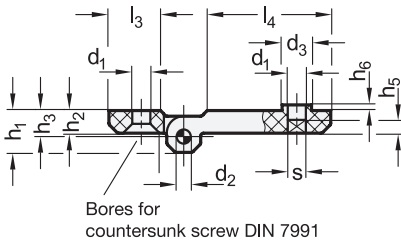


**Assembly instruction**



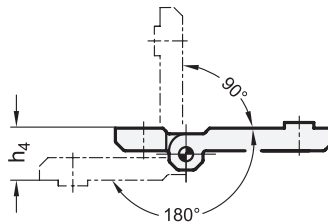
**elesa**  
ELESA original design CFM-TR-G.

**Type**  
**AG** 2x bores for countersunk screws, 1x bore for panels



Bores for countersunk screw DIN 7991

**Swiveling range**



1 2

$l_1$	$l_2$	$d_1$	$d_2$	$d_3$	$h_1$	$h_2$	$h_3$	$h_4 \approx$	$h_5$	$h_6$	$l_3$	$l_4$	$m_1 \pm 0,25$	$m_2 \pm 0,25$	$m_3$	$m_4$	$s$
64	40	5,5	4	10,5	9	5	5,5	11	4,1	2	14	38,5	12,5	25	32,5	7,5	5,6
77	50	6,5	6	10,5	11,5	6	6,5	13	4,7	2	18	45	15	30	39,5	10,5	6,6
90	60	6,5	8	10,5	15	8	8,5	17	4,7	2	21	51,5	18	36	47,5	12,5	6,6

**Specification**

- Plastic (Polyamide PA-HP)
  - Glass fiber reinforced
  - Temperature resistant up to 70 °C
  - Black, matte finish
- Pin  
Stainless steel AISI 303
- Step washer  
Rubber NBR
  - Hardness 70 Shore A
  - FDA compliant plastic granulate
- Flat washer  
Stainless steel
- *Load Rating Information* → Page QVX
- *Plastic Characteristics* → Page QVX
- *Stainless Steel Characteristics* → Page QVX
- RoHS

**Information**

Hinges GN 237.1 have a design that makes them perfect for attaching panels, such as of glass or plastic.

For installation, set the centering aid  $d_3$  of the hinge against an appropriately-sized hole in the panel. The hinge is attached with a carriage bolt DIN 603, which is fastened on the back side of the panel with a nut, a step washer and a flat washer.

The step washer and flat washer are included.

**see also...**

- *List of Hinge Types* → Page QVX
- *Hinges GN 237.1 (Plastic)* → Page QVX
- *Stainless Steel Sheet Metal Hinges GN 1364 (pointed)* → Page QVX
- *Stainless Steel Spacer Plates GN 2370* → Page QVX
- *Stainless Steel Plates with Tapped Holes GN 2372* → Page QVX
- *Rubber Bumper Stops GN 2374* → Page QVX

**How to order**

**GN 237.1-77-50-AS**

1	$l_1$
2	$l_2$
3	Type

3.1  
3.2  
3.3  
3.4  
3.5  
3.6  
3.7  
3.8  
3.9