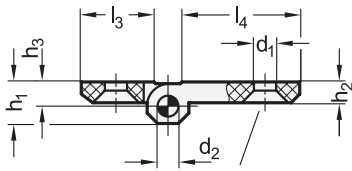
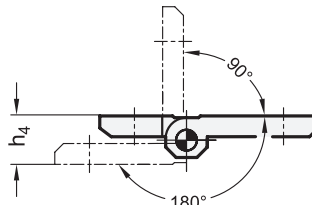


3 Type
A 2x2 bores for countersunk screws



Bores for countersunk screw DIN 7991

Swiveling range



1

2

l_1 elongated on one side	l_1 elongated on both sides	l_2	d_1	d_2	h_1	h_2	h_3	$h_4 \approx$	l_3	l_4	$m_1 \pm 0,25$	$m_2 \pm 0,25$	m_3	m_4
63	-	50	6,5	6	11,5	6	6,5	13	18	31	43	30	15	28
-	76	50	6,5	6	11,5	6	6,5	13	31	31	56	30	28	28
90	-	60	6,5	8	15	8	8,5	17	21	51	63	36	18	45
-	120	60	6,5	8	15	8	8,5	17	51	51	90	36	45	45

Specification

- Plastic (Polyamide PA-HP)
 - Glass fiber reinforced
 - Temperature resistant up to 140 °C
 - Black, matte finish
- Pin
Stainless steel AISI 303
- *Load Rating Information* → Page QVX
- *Plastic Characteristics* → Page QVX
- *Stainless Steel Characteristics* → Page QVX
- **RoHS**

Information

Hinges GN 237.1 with horizontally elongated hinge wings are made in a compact and sturdy design. They are used when larger spacings are required for the fastening holes.

see also...

- *List of Hinge Types* → Page QVX
- *Hinges GN 237.1 (Plastic)* → Page QVX
- *Hinges GN 237 (Zinc Die casting / Stainless Steel, horizontally elongated)* → Page QVX
- *Stainless Steel Spacer Plates GN 2370* → Page QVX
- *Stainless Steel Plates with Tapped Holes GN 2372* → Page QVX
- *Rubber Bumper Stops GN 2374* → Page QVX

How to order

GN 237.1-76-50-A

1	l_1
2	l_2
3	Type

3.1
3.2
3.3
3.4
3.5
3.6
3.7
3.8
3.9