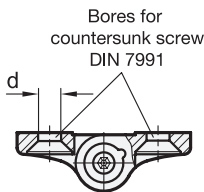
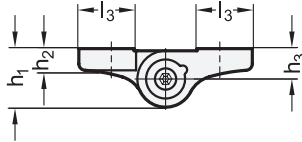
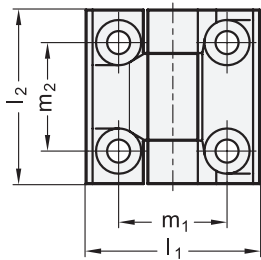


GN 437

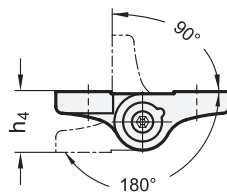
Zinc die casting / Stainless Steel

Hinges

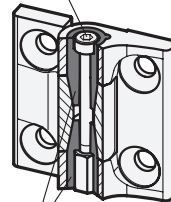
with adjustable friction



Swivelling range



Setting screw with internal hexagon A/F



Friction cone



4 Type

A 2x2 bores for countersunk screw

2

3

l ₁	l ₂	d	h ₁	h ₂	h ₃	h ₄	l ₃	m ₁	m ₂	A/F	max. recommended tightening torque of the setting screw in Nm	Friction torque in Nm ≈	
												ZD	A4
40	40	5,3	13,5	5	7	14	13	25	25	2,5	0,5	2	3
50	50	6,5	15,5	6	8	16	16,5	30	30	3	0,75	4	4
60	60	8,3	18,5	7,5	9,5	19	20	36	36	4	1,5	6,5	6

Specification

1

5

- Zinc die casting plastic coated black, RAL 9005, textured finish silver, RAL 9006, textured finish **ZD** **SW** **SR**
- Stainless Steel AISI 316 matte shot-blasted **A4** **GS**
- Friction cone Plastic (Polyacetal POM) black, RAL 9005 temperature resistant up to 80 °C
- Setting screw
 - Steel, zinc plated, blue passivated for ZD
 - Stainless Steel A4 for A4
- Hexagon nut
 - Steel, zinc plated, blue passivated for ZD
 - Stainless Steel AISI 316 LHC for A4
- Load rating information → Page 1459
- Plastic characteristics → Page 1483
- Stainless Steel characteristics → Page 1489
- RoHS

Accessory

- Stainless Steel-Spacer plates GN 2370 → Page 961

Information

The setting screw in the hinges GN 437 allows the mobility of the hinge to be changed. This also generates a constant braking torque adjustable across the whole of the rotating range. The rotation of doors and flaps is so inhibited, also preventing the inadvertent movement.

The friction torque is accomplished by interlocking two slim friction cones. The large friction surface and the hard-wearing plastic of the friction cones guarantee a long service life with only slight reduction in the friction torque over time. This can be re-adjusted, if necessary, with the setting screw.

Owing to the structure and the prestress of the friction cones, the hinge has virtually no radial play and no play at all in axial direction. The stainless steel version is particularly suited for applications in highly aggressive conditions.

see also...

- List of hinge types → Page 956 ff.
- Hinges GN 233 (with adjustable friction) → Page 984
- Hinges GN 437.1 → New products
- Hinges GN 437.2 (with clamp) → New products

How to order

1	Material
2	l ₁
3	l ₂
4	Type
5	Finish

GN 437-ZD-60-60-A-SR