

- 2 Type**
- O** Without closing flap
 - S** With closing flap (only in size $b_1 = 120$ available)

1

| b_1 | b_2 | b_3 | h_1 | h_2 | l_1 | l_2 | l_3 | m_1 | F_1 in N | F_2 in N |
|--------|-------|-------|-------|-------|-------|-------|-------|-------|---------------|---------------|
| 110 -1 | 94 | 96 | 73 | 42 | 24 | 20 | 21,5 | 64 | 1300 | 500 |
| 120 | 94 | 103 | 95 | 58 | 28,5 | 24 | 26,5 | 64 | 1200 | 400 |

Specification

- Plastic Technopolymer (Polyamide PA)
 - Glass fiber reinforced
 - Temperature resistant up to 100 °C
 - Black-gray, matte RAL 7021
- Closing flap (Type S)
 - With stainless steel torque spring
- Color of the cover (matte finish):
 - Black-gray, RAL 7021
 - Orange, RAL 2004
 - Gray, RAL 7035
 - Yellow, RAL 1021
 - Blue, RAL 5024
 - Red, RAL 3000
 - Green, RAL 6017
- *Plastic Characteristics* → Page 2158
- RoHS

3

Information

The design of the GN 733 gripping trays matches the product family Ergostyle®.

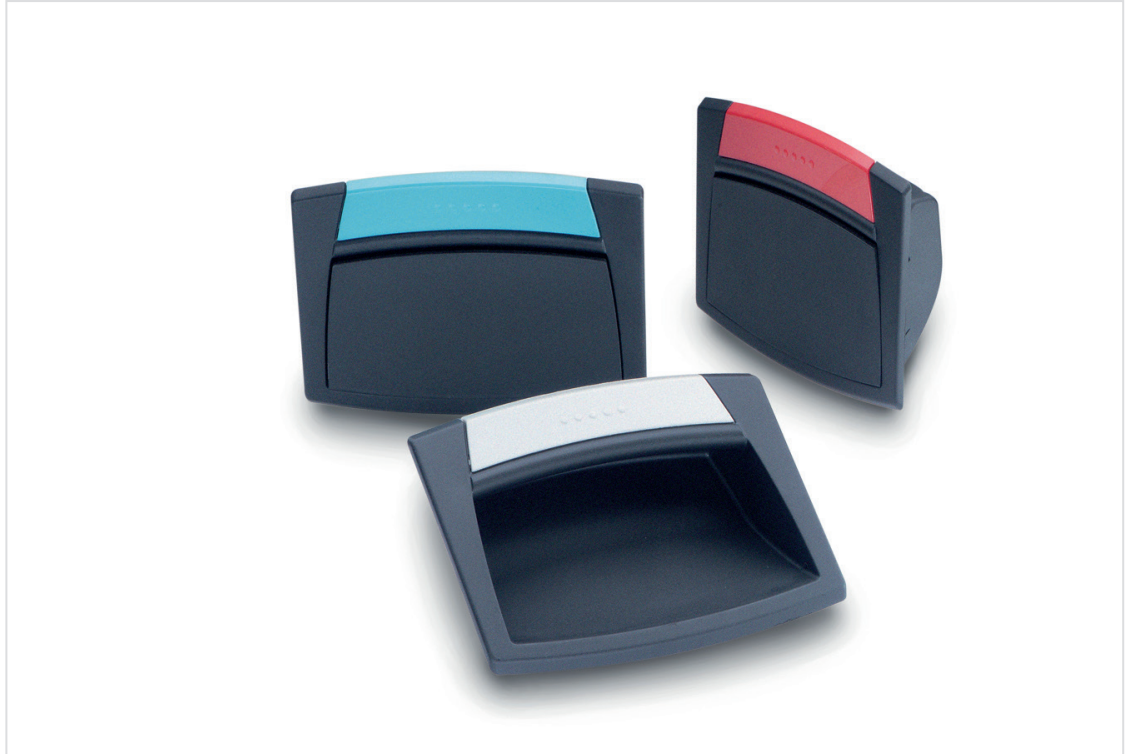
The removable cover plate shrouds the fixing screws.

The values of the load capacities F_1 and F_2 were tested with wall thickness $s = 1.5$ mm.

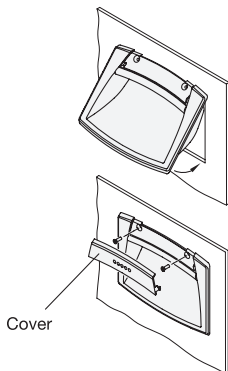
see also...

- *Product Family Ergostyle®* → Page 18
- *Gripping Trays GN 731 (Clip-In Type)* → Page 222

| | |
|-------------------------|-----------------------------|
| How to order | 1 b_1 |
| GN 733-120-S-DSG | 2 Type |
| | 3 Color of the cover |



1.1
1.2
1.3
1.4

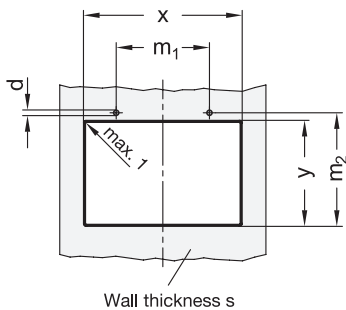


2.1
2.2

Mounting information

- 1) Drill the handle housing according to the template dimensions reported in the table.
- 2) Remove all drilling burrs before fitting the handle.
- 3) Fit the upper part of the handle into the housing and press onto the lower part until firmly in place.
- 4) Gently push the handle downward.
- 5) Fit the two self-tapping screws.
- 6) Assemble the screw cover by pressing on the lateral sides first and finally on the central part.

2.3
2.4



| Wall thickness s | d ±0,02 for self-tapping screw | for M3 | for $b_1 = 110$ | | | | for $b_1 = 120$ | | | |
|-------------------------|---|---|------------------|------------------|------------------------------|------------------------------|------------------|------------------|------------------------------|------------------------------|
| | | | x +0,2 | y +0,5 | m₁ ±0,1 | m₂ ±0,1 | x +0,2 | y +0,5 | m₁ ±0,1 | m₂ ±0,1 |
| 1 ... 1,2 | 2,5 | Core hole drilling 2,5 Through bore-hole 3,2 | 100 | 52 | 64 | 55,5 | 107,5 | 73 | 64 | 76,8 |
| > 1,2 ... 1,5 | 2,55 | | 100 | 52,2 | 64 | 55,5 | 107,5 | 73 | 64 | 77 |
| > 1,5 ... 2 | 2,6 | | 100 | 52,5 | 64 | 56 | 107,5 | 73 | 64 | 77,2 |
| > 2 ... 2,5 | 2,65 | | 100 | 52,7 | 64 | 56,2 | 107,5 | 74 | 64 | 77,5 |
| > 2,5 ... 3 | 2,65 | | 100 | 53 | 64 | 56,5 | 107,5 | 74 | 64 | 77,8 |
| > 3 ... 3,5 | 2,7 | | 100 | 53,2 | 64 | 56,7 | 107,5 | 74 | 64 | 78,1 |
| > 3,5 ... 4 | 2,7 | | 100 | 53,4 | 64 | 56,9 | 107,5 | 75 | 64 | 78,4 |
| > 4 ... 4,5 | 2,7 | | 100 | 53,6 | 64 | 57,1 | 107,5 | 75 | 64 | 78,7 |
| > 4,5 ... 5 | 2,7 | | 100 | 53,8 | 64 | 57,3 | 107,5 | 75 | 64 | 79 |

