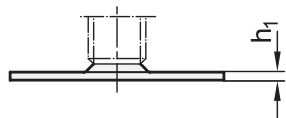
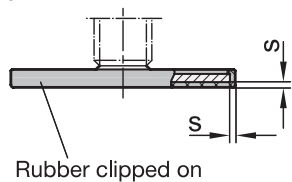


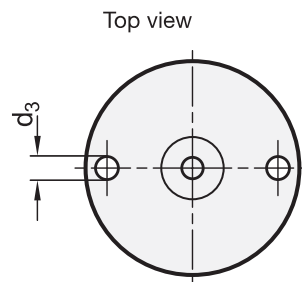
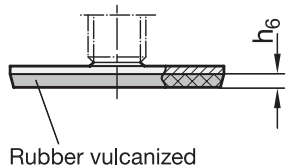
Type A0



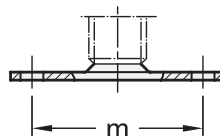
Type A1



Type A3

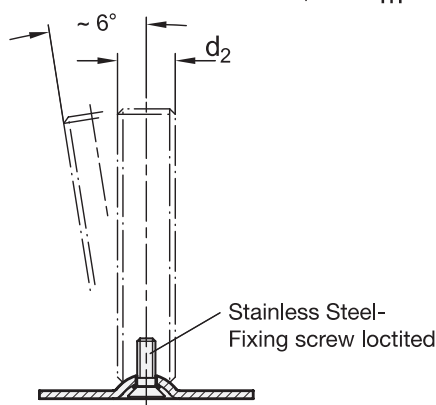


Type B0



**4 Type (Base plate)**

- A0** without rubber underlay
- B0** without rubber underlay, with 2 fixing bores
- A1** with rubber underlay, clipped on, black
- A3** with rubber underlay, rubber vulcanised, black



d <sub>1</sub>	d <sub>2</sub>	l <sub>1</sub>		Version							l <sub>7</sub>	d <sub>3</sub>	h <sub>1</sub>	h <sub>6</sub>	m	s
		S / SK	U / UK	S	SK	U	UK	X	X							
40	M 8	40	50	63	-	-	-	-	-	-	25	5,4	2	3,5	30	1,5
40	M 10	50	60	80	100	-	-	-	-	-	28	5,4	2	3,5	30	1,5
40	M 12	60	80	100	125	-	-	-	-	-	31	5,4	2	3,5	30	1,5
40*	M 16	-	-	-	-	75	100	125	150	200	37	5,4	2	3,5	30	1,5
50	M 8	40	50	63	-	-	-	-	-	-	25	6,6	2,5	4	38	2
50	M 10	50	60	80	100	-	-	-	-	-	28	6,6	2,5	4	38	2
50	M 12	60	80	100	125	-	-	-	-	-	32	6,6	2,5	4	38	2
50	M 16	-	-	-	-	75	100	125	150	200	37	6,6	2,5	4	38	2
60	M 8	40	50	63	-	-	-	-	-	-	25	6,6	2,5	4,5	48	2
60	M 10	50	60	80	100	-	-	-	-	-	28	6,6	2,5	4,5	48	2
60	M 12	60	80	100	125	-	-	-	-	-	32	6,6	2,5	4,5	48	2
60	M 16	-	-	-	-	75	100	125	150	200	37	6,6	2,5	4,5	48	2
80	M 8	40	50	63	-	-	-	-	-	-	26	8,6	3	5	64	2
80	M 10	50	60	80	100	-	-	-	-	-	29	8,6	3	5	64	2
80	M 12	60	80	100	125	-	-	-	-	-	32	8,6	3	5	64	2
80	M 16	-	-	-	-	75	100	125	150	200	38	8,6	3	5	64	2
80	M 20	-	-	-	-	75	100	125	150	200	45	8,6	3	5	64	2
80	M 24	-	-	-	-	100	125	150	200	-	-	8,6	3	5	64	2

\* not available in type B0

**Specification**

- Base plate  
Steel, zinc plated
- Threaded stem  
Steel, zinc plated, blue passivated
- Hexagon nut ISO 4032  
Steel, zinc plated, blue passivated

- Rubber underlay, clipped on  
black, Santoprene® (TPE)  
≈ 80 Shore A
- Rubber underlay, vulcanised  
black, Perbunan® (NBR)  
70±5 Shore A

- *Elastomer characteristics* → Page 1483
- *Load rating information* → Page 1472
- **RoHS compliant**

**Versions of threaded stem**

<p><b>5</b>  <b>S</b> without nut  <b>SK</b> with nut</p>	<p><b>5</b>  <b>U</b> without nut  <b>UK</b> with nut</p>	<p><b>5</b>  <b>X</b> with female thread</p>
<p>External hexagon at the bottom at <math>d_2</math>  M 8, M 10, M 12</p>	<p>Hexagon socket at the top  Wrench flat at the bottom at <math>d_2</math>  M 16, M 20, M 24</p>	<p>External hexagon with female thread at <math>d_2</math>  M 8, M 10, M 12, M 16, M 20</p>

$d_1$	$d_2$	$h_3$	$h_4$	A/F <sub>1</sub>	A/F <sub>2</sub>	A/F <sub>3</sub>	A/F <sub>7</sub>	t
40	M 8	11	-	17	-	-	14	8
40	M 10	11	-	17	-	-	14	10
40	M 12	11	-	17	-	-	17	12
40	M 16	-	17	-	12	8	22	16
50	M 8	11	-	17	-	-	14	8
50	M 10	11	-	17	-	-	14	10
50	M 12	11	-	17	-	-	17	12
50	M 16	-	17	-	12	8	22	16
60	M 8	11	-	17	-	-	14	8
60	M 10	11	-	17	-	-	14	10
60	M 12	11	-	17	-	-	17	12
60	M 16	-	17	-	12	8	22	16
80	M 8	12	-	17	-	-	14	8
80	M 10	12	-	17	-	-	14	10
80	M 12	12	-	17	-	-	17	12
80	M 16	-	18	-	12	8	22	16
80	M 20	-	19	-	15	10	27	20
80	M 24	-	22	-	19	12	-	-

**Information**

GN 40 levelling feet can be used in a host of combinations of base plates and adjustable spindle versions.

The base plate with the rubber underlay protects sensitive surfaces and reduces lateral slippage. The type B0 can also be fastened to the mounting surface through two holes.

The levelling feet are supplied fully assembled and are not removable.

**see also...**

- Levelling feet GN 40 (Steel, without fixing lug) → Page 1040
- Levelling feet GN 42 (Steel, with fixing lug, drop shape) → Page 1040
- St. Steel-Levelling feet GN 41 (A2, without fixing lug) → Page 1042
- St. Steel-Levelling feet GN 43 (A2, with fixing lug) → Page 1042
- St. Steel-Levelling feet GN 44 / GN 45 (A4, without / with fixing lug) → Page XYZ / XYZ
- Insert bushings GN 448 (Plastic, for tubes) → Page 1306 / 1307
- Insert bushings GN 992 / GN 992.5 (Aluminum / Stainless Steel, for tubes) → Page 1309

How to order (without fixing lug)		1	$d_1$
		2	$d_2$
		3	$l_1$ ( $l_7$ )
		4	Type (Base plate)
		5	Version (Stem)
<b>GN 40-80-M12-100-A1-SK</b>			

