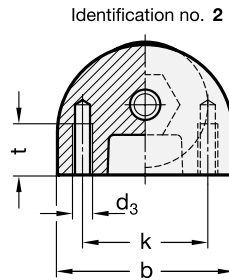
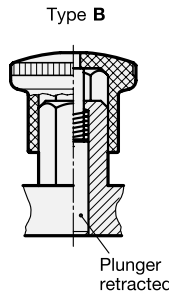


Bore for cap screw
DIN 912

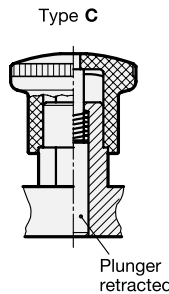
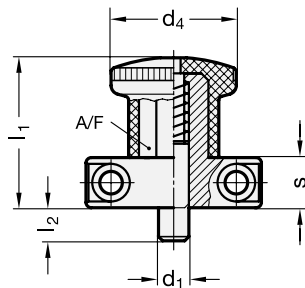


3 Type

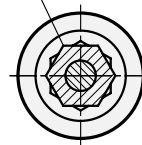
- B** without rest position
- C** with rest position

4 Identification no.

- 1** Mounting from the front
- 2** Mounting from the back



Rest position with
6 indexing positions (6x30°)



1

2

d_1 Pin $^{0}_{-0.06}$ Bore $^{+0.05}_{+0.1}$	b	d_2	d_3	d_4	h	k	l_1	l_2 min.	l_3	l_4	s	t	Spring load in N \approx		
														initial	end
5	35	4,3	M 4	25	26	25	32	6	6	14	12	10	5	15	
6	35	4,3	M 4	25	26	25	32	6	6	14	12	10	5	15	
8	47	5,3	M 5	33	34	35	39	10	10	18	14	12	9	35	
10	47	5,3	M 5	33	34	35	39	10	10	18	14	12	9	35	

Specification

- Guide
Zinc die casting
plastic coated
black, textured finish
- Plunger
Stainless Steel AISI 303
- Spring
Stainless Steel AISI 301
- Knob
Plastic (Polyamide PA)
- black, matt finish
- not removable
- Plastic characteristics → Page 331
- Stainless Steel characteristics → Page 334
- RoHS compliant

Information

The outstanding feature of the indexing plungers GN 412 is their compact design. They are mounted either from the front with cylinder head screws or from the back through threads. In Type C, the knob can be turned by 30° after retracting the indexing pin, holding it in the „retracted“ position by means of the indexing lock.

The dimensions and connection measurements match the combination with GN 412.1 mounting blocks in connection with positioning bushings GN 412.2 or GN 412.3.

see also...

- Mounting blocks GN 412.1 → Main Catalogue Page 452
- Positioning bushings GN 412.2 → Main Catalogue Page 454
- Positioning bushings with ramping cone GN 412.3 → Main Catalogue Page 455

How to order	1 d_1
1	b
2	Type
3	Identification no.
4	