

LM Series

Construction

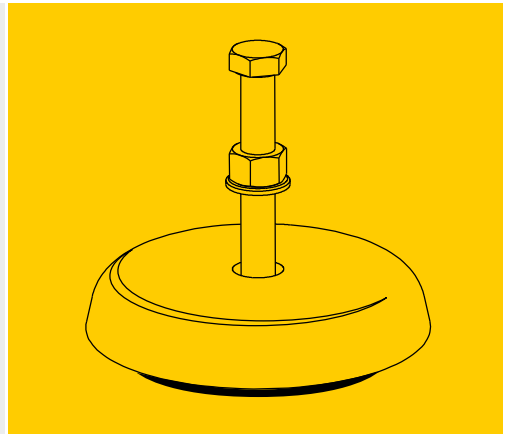
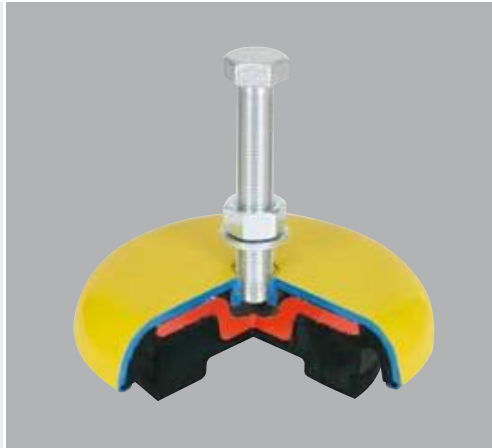
Elastomer-metal combination, compact design, integrated levelling system, 7 sizes in 3 Shore hardnesses

Properties

- Active and passive supports
- Vibration isolation
- Shock absorption
- Structure-borne sound insulation
- Anchor-free installation
- Load range
0.1 kN – 110 kN
- Natural frequency (stat.) 6 Hz – 20 Hz
- Fine-pitch thread

Materials

- Elastomer body in CR grade with high elasticity, oil-resistant and non-ageing
- Outer cap made of steel St W 23, or grey cast iron, Metal surface powder-coated, yellow
- Forged pressure plate
- Screw ISO 8676 (DIN 961), M5/M10/M12 ISO 4017 (DIN 933), grade 8.8, galvanised



Levelling

Levelling range max. 5 – 30 mm

Remarks

- Options:
- metal parts made of stainless steel
 - elements with square head bolts

Delivery contents

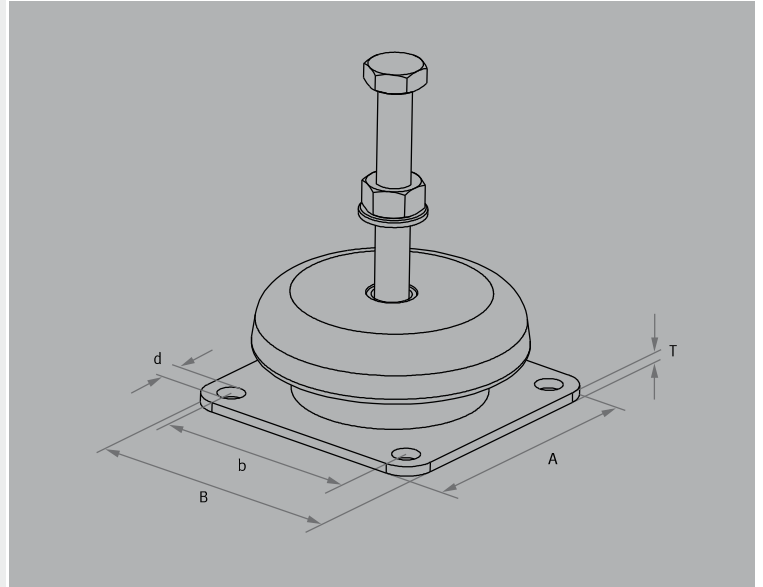
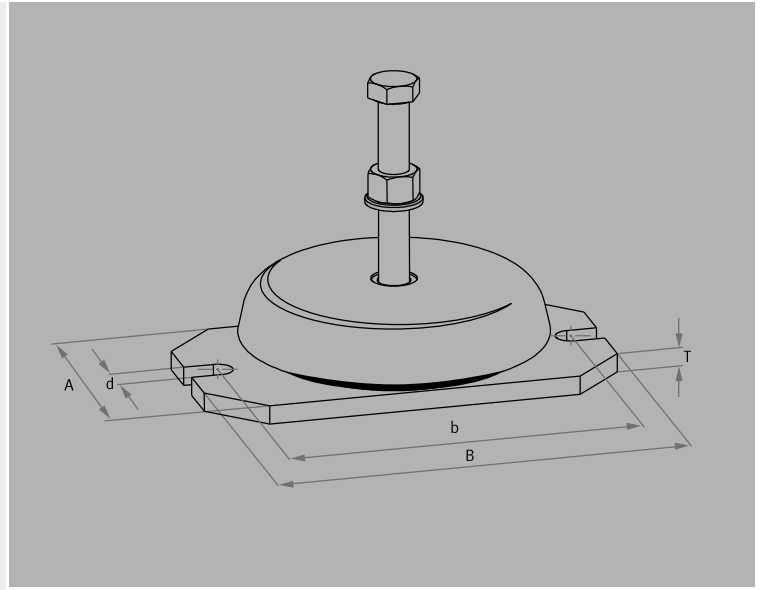
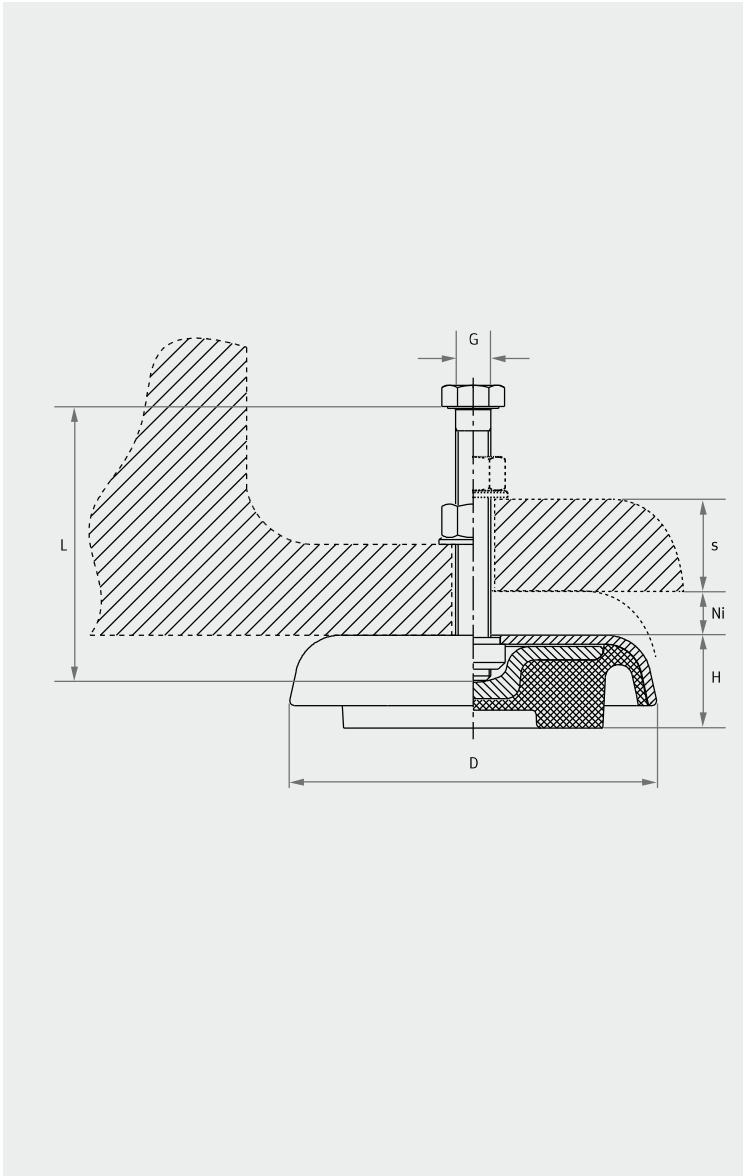
Standard with mounting screw, washer and nut, BA type without anchor bolt

Variants

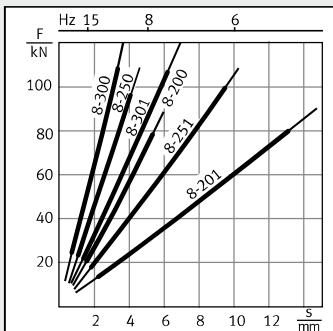
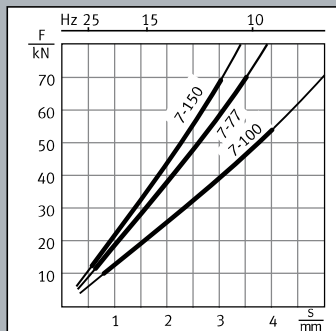
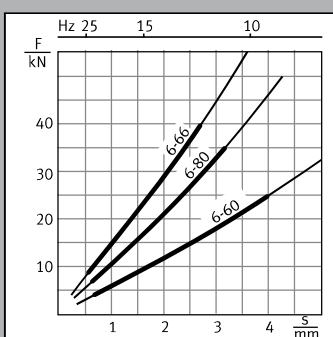
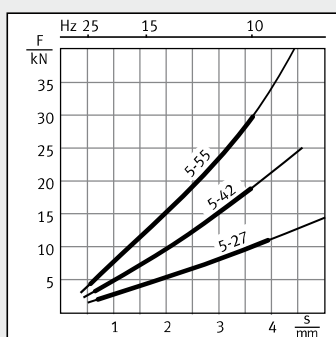
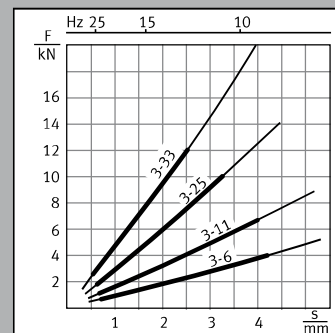
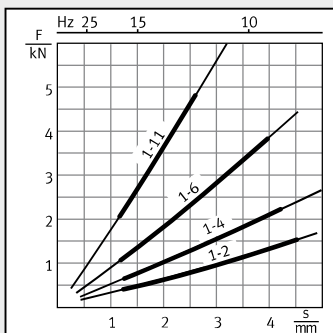
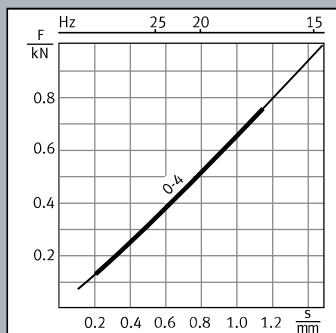
Standard: LM 5-42

LM Series	0-4	1-4	1-6	1-11	3-11	3-25	3-33	5-27	5-42	5-55	6-60	6-80	6-66	7-100	7-77	8-250	8-251
Load per element in kN																	
Presses in general Strokes up to 110/min. (max.)		2.0	3.2	4.5	5.0	7.0	10.0	9.0	13.0	20.0	18.0	30.0	35.0	50.0	65.0	100.0	90.0
Eccentric presses and automatic cutting presses strokes up to 300/min. (max.)		1.3	2.4		4.0	6.0		7.0	9.5		13.0	23.0		40.0		70.0	60.0
For higher stroke rates, please contact us																	
Turning machines				2.2		3.0	4.2		5.0	10.0	7.0	12.0	20.0	17.0	30.0	25.0	
Milling machines				3.0	2.5	4.0	6.0	4.0	7.0	15.0	10.0	20.0	28.0	23.0	36.0	35.0	
Surface grinders				2.2		3.0	4.2		5.0	10.0	7.0	12.0	20.0	17.0	30.0	25.0	
Machines in general	0.8	2.2	3.8	4.8	6.5	9.0	12.0	11.0	16.0	30.0	25.0	35.0	40.0	64.0	72.0	100.0	100.0
Static maximum load	1.0	2.6	4.3	6.0	8.8	12.0	20.0	14.0	22.0	40.0	32.0	50.0	55.0	70.0	80.0	110.0	110.0

The load values listed in this table represent reference values that were determined on the basis of good stability and anchor-free installation of machines. The load areas not highlighted in colour in the table are used in individual vibrational machine supports that were designed according to diagram. For elements not listed in the table, refer to page 7.



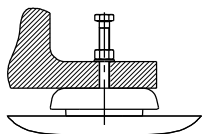
LM Series		0-4	1-2	1-11	3-6	3-33	5-27	5-55	6-60	6-66	7-100	7-77	8-200	8-201	
Dimension table			1-4		3-11		5-42		6-80		7-150		8-250	8-251	
Dimensions in mm		1-6			3-25								8-300	8-301	
Standard version															
Diameter	D	40	80		120		160		185		241		315		
Height	H	15	30	25	37	32	41	35	45	39	60	54	70	100	
Thread size	G	M5	M10		M12		M16 x 1.5		M20 x 1.5		M24 x 1.5		M30 x 2		
Screw length	L	30	80		90		100		120		140		160		
Max. machine base gauge	s	11	43		44		44		58		70		80		
Levelling height	Ni	5	15		20		20		20		20		30		
Weight / element	kg	0.05	0.4		1.1		2.2		4		8.5	8	18	20.8	
BA base plate															
Length	B		□ 83		158		220		245		300		395	395	
Width	A		□ 83		90		114		150		197		270	270	
Gauge	T		3.5		10		10		10		15		15	15	
Hole spacing	b		65		140		190		215		265		357	357	
Hole	d		8		13		16		20		20		25	25	
Weight BA version	kg		0.6		2		3.1		6.6		15		30	32.5	



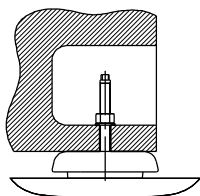
Accented characteristic curve = preferred load region, taking figures from an operational installation.

Mounting options

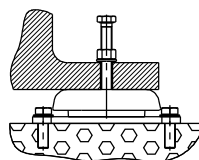
Typ LM



Type LM with square head bolt



Type LM bolted to the floor



Installation not permissible

