

ROLL

BENDING UNITS



ROLL

BENDING UNITS

Device that allows simultaneous calibration and bending of metal sheet or steel. It also allows the execution of many different types of folds, such as undersquare folds (with an angulation less than 90 °), open folds (greater than 90 °), large radius, maintaining requested tolerance angulation. Also performs "Z" open folds, doublefold etc. The system consists of a rotating previously shaped according to required applications. The product is built with very strong materials ,wear and compression resistant, hardened and surface treated in order to considerably reduce friction. The product is patented.



STRENGTHS



PLEASE DESCRIBE YOUR APPLICATION

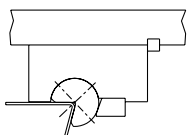
MODEL

DIAMETER

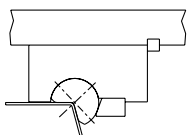
SHAPE OF BEND

01 = ROLLA
 02 = ROLLB
 03 = ROLLC

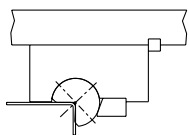
Ø15
 Ø25
 Ø40
 Ø50
 Ø65
 Ø75
 Ø100



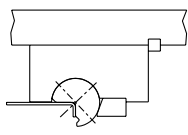
Shape = TD
ANGLE BEND



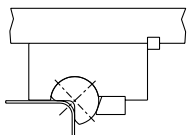
Shape = TE
OPENED BEND



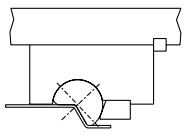
Shape = TI
NORMAL BEND



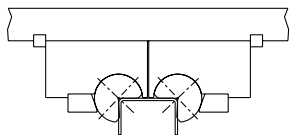
Shape = TA
BEND WITH SHORT EDGE



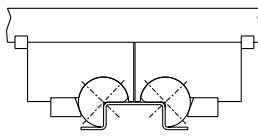
Shape = TB
BEND WITH WIDE RADIUS



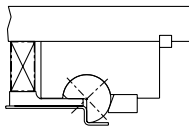
Shape = TH
OPENED "Z" BEND



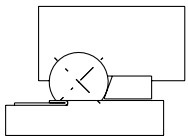
Shape = TC
DOUBLE BEND



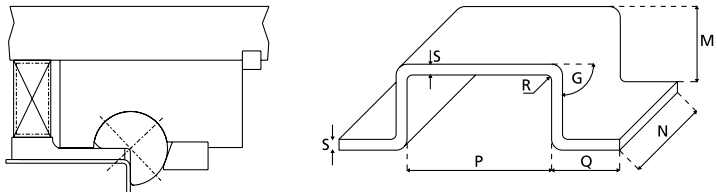
Shape = TG
DOUBLE OPENED "Z" BEND



Shape = TF
"Z" BEND



Shape = TL
CRUSHED BEND



BLANK HOLDER YES NO

NOTE _____

EXPECTED YEARLY PRODUCTION _____

THICKNESS S _____

TYPE OF MATERIAL _____

HARDNESS N/mm² _____

TYPE OF BEND _____

LENGTH N _____

ANGULATION G _____

HEIGHT M _____

WIDTH P _____

WIDTH Q _____

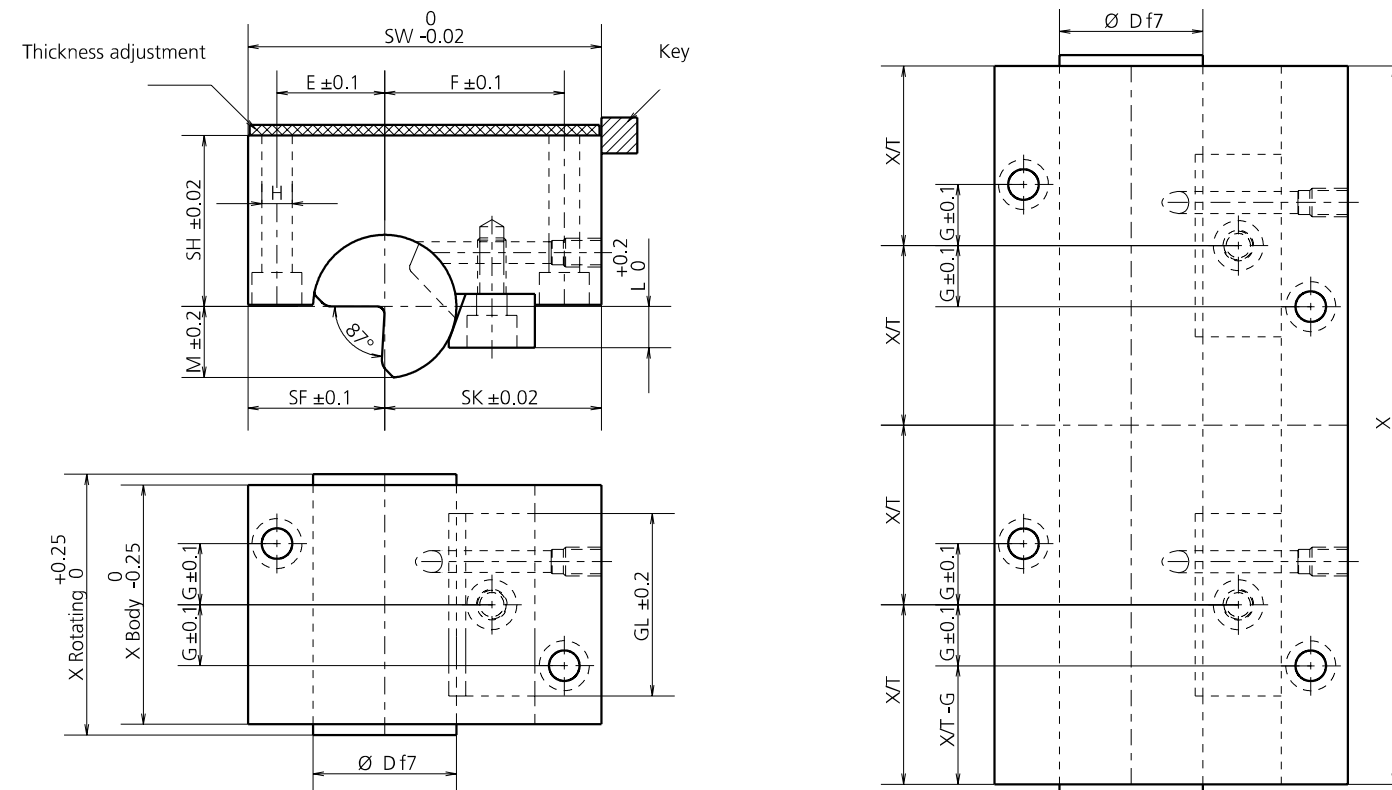
RADIUS R _____

ATTACH TECHNICAL DRAWING OF THE BEND

FOR SPARE PARTS INDICATE THE PROJECT NUMBER MARKED ON THE PRODUCT.

ORDER EXAMPLE

MODEL A SHAPE OF BEND TF Ø DIAMETER Ø50 LENGTH 500



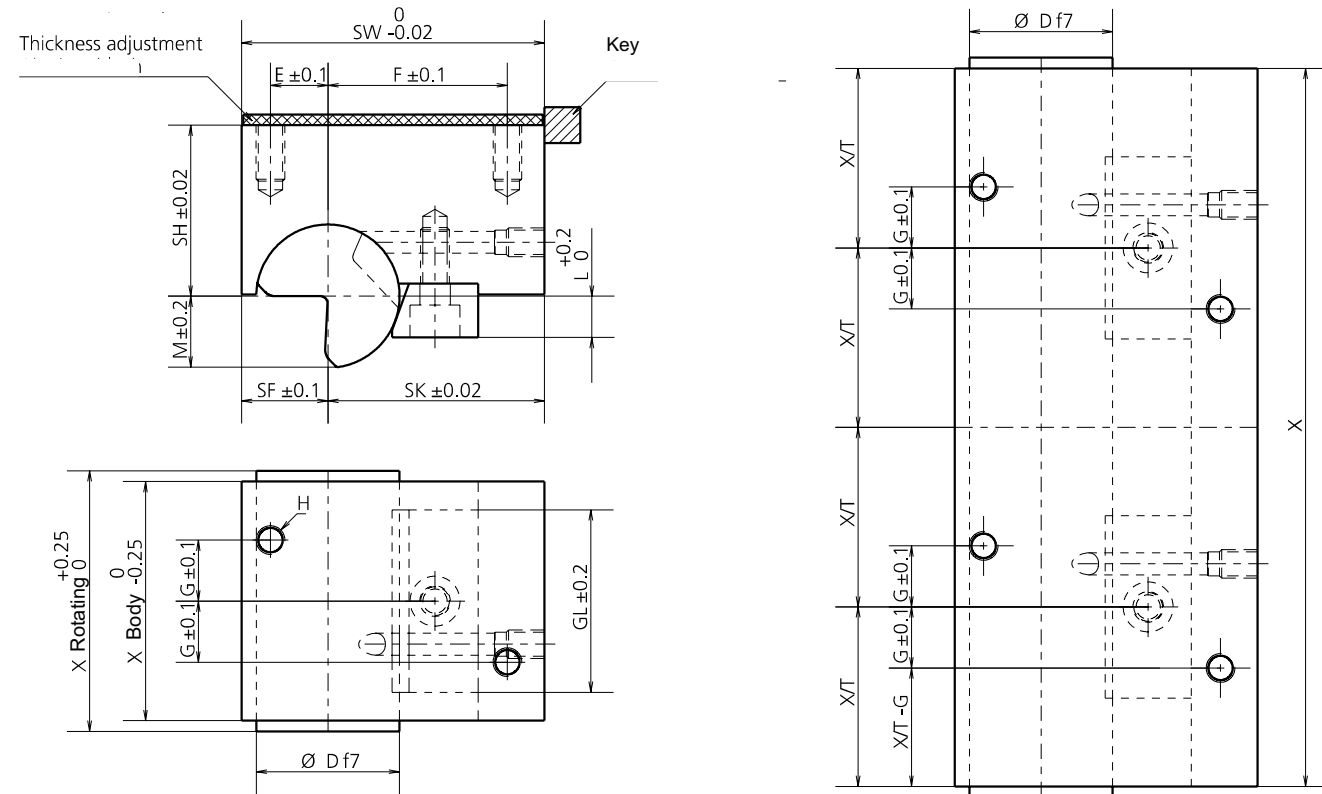
MODEL	X	X/T	BRACKETS	X	X/T	BRACKETS	X	X/T	BRACKETS	X	X/T	BRACKETS	G	E	F
ROLL-A...15	77-150	X/4	2	152-225	X/6	3	227-300	X/8	4	302-375	X/10	5	14.5	13.5	29.5
ROLL-A...25	102-200	X/4	2	202-300	X/6	3	302-400	X/8	4	402-500	X/10	5	17.5	20.5	37.5
ROLL-A...40	132-300	X/4	2	262-390	X/6	3	392-520	X/8	4	522-600	X/10	5	22	30	48
ROLL-A...50	152-300	X/4	2	302-450	X/6	3	452-600	X/8	4	/	X/10	5	26	36	65
ROLL-A...65	182-360	X/4	2	362-540	X/6	3	542-600	X/8	4	/	X/10	5	32	44	80
ROLL-A...75	202-400	X/4	2	402-600	X/6	3	/	X/8	4	/	X/10	5	35	55	90
ROLL-A...100	241-480	X/4	2	482-600	X/6	3	/	X/8	4	/	X/10	5	45	64	104

	ROLL-A...15	ROLL-A...25	ROLL-A...40	ROLL-A...50	ROLL-A...65	ROLL-A...75	ROLL-A...100
METAL SHEET THICKNESS	0.5-0.9	0.9-1.7	1.7-2.8	2.8-3.8	3.8-4.9	4.9-6.0	6.0-8.0
(X) LENGTHS MIN-MAX	30-375	40-500	40-600	50-600	50-600	50-600	60-600
(D) ROTATING DIAMETER	15	25	40	50	65	75	100
(SW) BODY WIDTH	54	73	98	123	148	175	196
(SF) DIST. MIN. ROTATING BODY-FRONT PART	19	28	40	47	56	70	78
(SK) DIST. ROTATING BODY - WEDGE	35	45	58	76	92	105	118
(SH) DIST. BODY-ROTATING BODY	22	38	48	60	73	86	96
(GL) SUPPORT WIDTH	28.06	38.1	50.8	63.5	76.2	88.9	116
(L) IHOLDER OVERALL	4.6	7	12	14.5	19	22	30
(M) IHOLDER	7.9	12.4	19.9	24.8	31.6	38	49.7
(H) DIAMETERS OF THE FIXING	M5	M8	M10	M10	M12	M12	M16
(E) POSITION OF THE FIXING	13.5	20.5	30	36	44	55	64
(F) POSITION OF THE FIXING	29.5	37.5	48	65	80	90	104
(G) POSITION OF THE FIXING	14.5	17.5	22	26	32	35	45

It works also without lubrication

ORDER EXAMPLE

MODEL A SHAPE OF BEND TB Ø DIAMETER Ø50 LENGTH 500



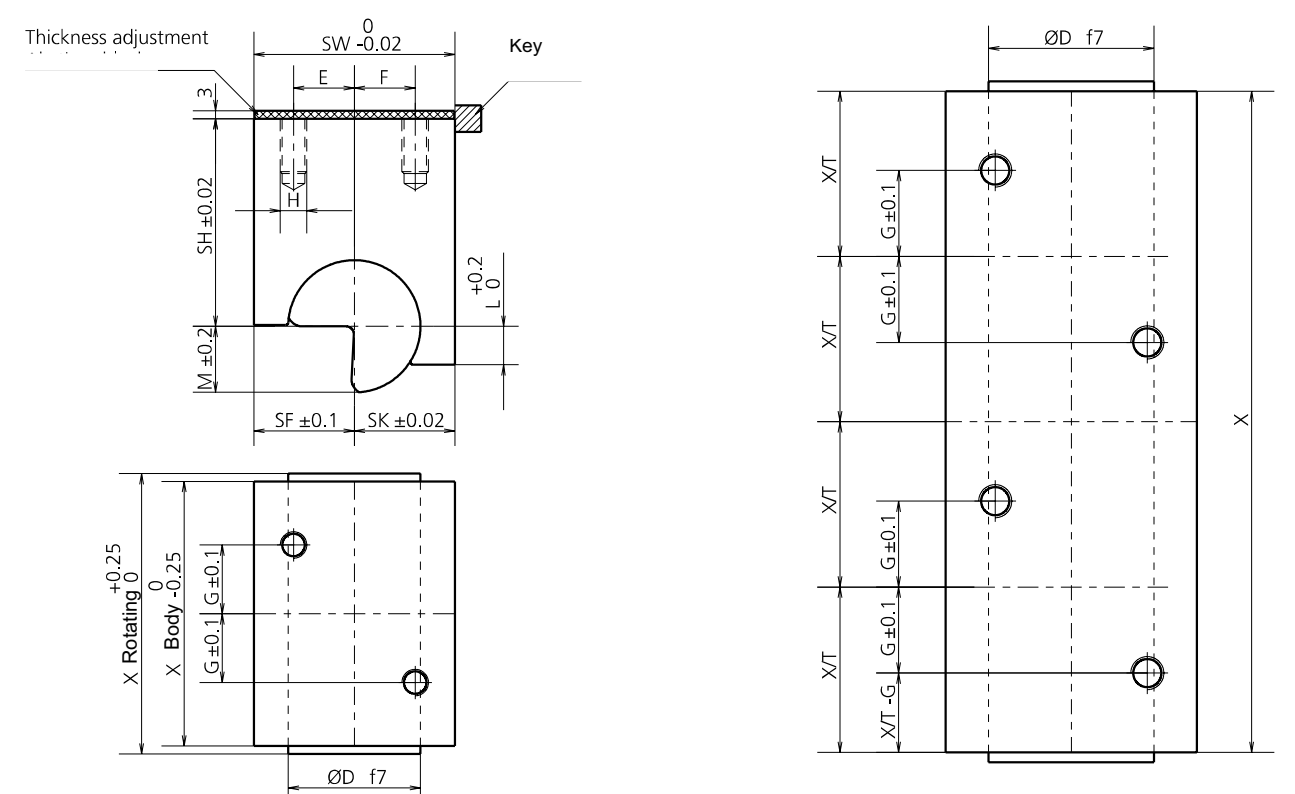
MODEL	X	X/T	BRACKET	X	X/T	BRACKET	X	X/T	BRACKET	X	X/T	BRACKET	G	E	F
ROLL-B...15	77-150	X/4	2	152-225	X/6	3	227-300	X/8	4	302-375	X/10	5	14.5	4.5	29.5
ROLL-B...25	102-200	X/4	2	202-300	X/6	3	302-400	X/8	4	402-500	X/10	5	17.5	7.5	37.5
ROLL-B...40	132-300	X/4	2	262-390	X/6	3	392-520	X/8	4	522-720	X/10	5	22	15	48
ROLL-B...50	152-300	X/4	2	302-450	X/6	3	452-720	X/8	4	/	X/10	5	26	19	65
ROLL-B...65	182-360	X/4	2	362-540	X/6	3	542-720	X/8	4	/	X/10	5	32	25	80
ROLL-B...75	202-400	X/4	2	402-720	X/6	3	/	X/8	4	/	X/10	5	35	32	90
ROLL-B...100	241-480	X/4	2	482-720	X/6	3	/	X/8	4	/	X/10	5	45	46	104

	ROLL-B...15	ROLL-B...25	ROLL-B...40	ROLL-B...50	ROLL-B...65	ROLL-B...75	ROLL-B...100
METAL SHEET THICKNESS	0.5-0.9	0.9-1.7	1.7-2.8	2.8-3.8	3.8-4.9	4.9-6.0	6.0-8.0
(X) LENGTHS MIN-MAX	25-375	30-500	35-600	45-600	50-600	50-600	60-600
(D) ROTATING DIAMETER	15	25	40	50	65	75	100
(SW) BODY WIDTH	44	59	84	106	131	149	178
(SF) DIST. MIN. ROTATING BODY-FRONT PART	9	14	26	30	39	44	60
(SK) DIST. ROTATING BODY - WEDGE	35	45	58	76	92	105	118
(SH) DIST. BODY-ROTATING BODY	22	38	48	60	73	86	96
(GL) SUPPORT WIDTH	28.06	38.1	50.8	63.5	76.2	88.9	116
(L) HOLDER OVERALL	4.6	7	12	14.5	19	22	30
(M) HOLDER	7.9	12.4	19.9	24.8	31.6	38	49.7
(H) DIAMETERS OF THE FIXING	M5	M8	M10	M10	M12	M12	M16
(E) POSITION OF THE FIXING	4.5	7.5	15	19	25	32	46
(F) POSITION OF THE FIXING	29.5	37.5	48	65	80	90	104
(G) POSITION OF THE FIXING	14.5	17.5	22	26	32	35	45

It works also without lubrication

ORDER EXAMPLE

MODEL B SHAPE OF BEND TL Ø DIAMETER Ø50 LENGTH 500



MODEL	X	X/T	BRACKET	X	X/T	BRACKET	X	X/T	BRACKET	X	X/T	BRACKET	G	E	F
ROLL-C...15	77-150	X/4	2	152-225	X/6	3	227-300	X/8	4	302-375	X/10	5	12	7.5	7.5
ROLL-C...25	102-200	X/4	2	202-300	X/6	3	302-400	X/8	4	402-500	X/10	5	16	10	10
ROLL-C...40	132-260	X/4	2	262-390	X/6	3	392-520	X/8	4	522-600	X/10	5	18	18	18
ROLL-C...50	152-300	X/4	2	302-450	X/6	3	452-600	X/8	4	/	X/10	5	30	23	23
ROLL-C...65	182-360	X/4	2	362-540	X/6	3	542-600	X/8	4	/	X/10	5	37	30	30
ROLL-C...75	202-400	X/4	2	402-600	X/6	3	/	X/8	4	/	X/10	5	40	37	37
ROLL-C...100	241-480	X/4	2	482-600	X/6	3	/	X/8	4	/	X/10	5	42	51	51

	ROLL-C...15	ROLL-C...25	ROLL-C...40	ROLL-C...50	ROLL-C...65	ROLL-C...75	ROLL-C...100
METAL SHEET THICKNESS	0.5-0.9	0.9-1.7	1.7-2.8	2.8-3.8	3.8-4.9	4.9-6.0	6.0-8.0
(X) LENGTHS MIN-MAX	25-375	30-500	35-600	45-600	50-600	50-600	60-600
(D) ROTATING DIAMETER	15	25	40	50	65	75	100
(SW) BODY WIDTH	25	38	56	76	95	105	140
(SF) DIST. MIN. ROTATING BODY-FRONT PART	12.5	19	28	38	47.5	52.5	70
(SK) DIST. ROTATING BODY - WEDGE	12.5	19	28	38	47.5	52.5	70
(SH) DIST. BODY-ROTATING BODY	32.5	44	59.5	78.5	91.5	104	123.5
(GL) SUPPORT WIDTH	4.5	7.5	11.5	14.5	19.5	23.5	116
(L) HOLDER OVERALL	29.5	7	12	14.5	19	22	30
(M) HOLDER	7.9	12.4	19.9	24.8	31.6	38	49.7
(H) DIAMETERS OF THE FIXING	M5	M8	M10	M10	M12	M12	M16
(E) POSITION OF THE FIXING	7.5	10	18	23	30	37	51
(F) POSITION OF THE FIXING	7.5	10	18	23	30	37	51
(G) POSITION OF THE FIXING	12	16	18	30	37	40	42

It works also without lubrication

ORDER EXAMPLE

MODEL C SHAPE OF BEND TE Ø DIAMETER Ø50 LENGTH 500



No horizontal position.



No lubrication is required during work.



Minimum size.



Do not disassemble.



Patent pending.



Use forbidden for persons with pacemakers.



Place a pressure regulator and lubricator.



Product tailored to the customer.



Patented system with integrated nitrogen stripper.



Range weight.



The duration of lifetime of the Newstark products depends on the proper use and maintenance!



Different range of load.



Excellent relation between size and power.



Sliding parts made by self-lubricating materials.



Security Microsensor.



Spare parts on stock.



Special applications achievement.



Slope application.



Standard Bracket.



Uniqueness of the product.



Special applications achievement.



Wide range of models.



Wide range of models.



Variety of applications.



Wide range of dimensions.



To work in combination.



Wide range of models.



CE Label.

WE MAKE INNOVA- TION



Via Ghebo 24 - 26B
35017 Piombino Dese
Padova - Italy

T +39 049 5743140
F +39 049 9368154
info@newstark.it



UK Distributer

Unit B1 & B2 Chaucer Business Park
Watery Lane, Kemsing
Kent, TN15 6QY

T: +44 (0) 1732 763377
E: sales@berger-tools.co.uk
W: www.berger-tools.co.uk

newstark.it

