

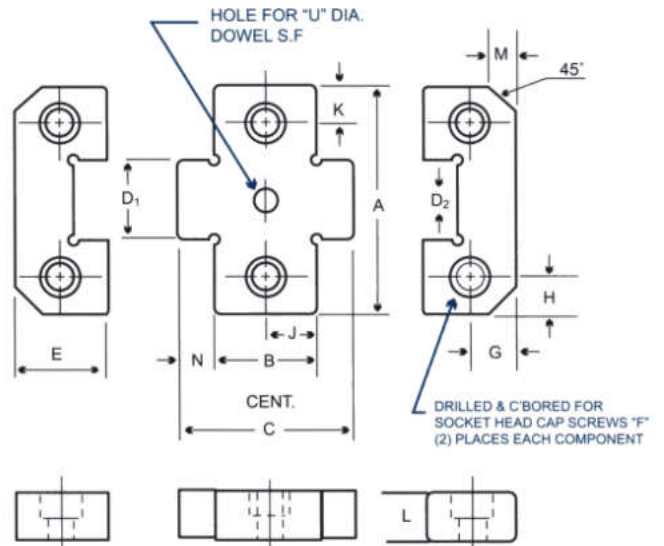
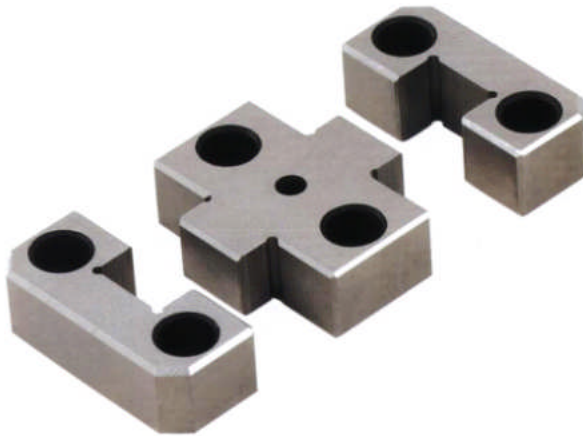


S03 X-Type Side Locks

MATERIAL: Tool Steel

HARDNESS: HRC58+/-2

HOW TO ORDER: use item code below



METRIC STANDARD

CODE	A +0.00 -0.01	B ±0.1	C	D ₁ +0.005 -0.0025	D ₂ +0.005 -0.000	E ±0.1	F	G ±0.1	H	J	K	L	M	N	U DIA.	Weight (kg)
S03-4026	40	26	43	12	12	21.5	M6-1X20	11	8	13	8	16	5	8.5	6 ^{H7} (6D IA X	0.35
S03-4036		36	53							18					25LG D WL)	0.40
S03-5026	50	26	43	17	17	21.5	M6-1X20	11	8	13	8	16	5	8.5	6 ^{H7} (10D IA X	0.43
S03-5036		36	53							18					30LG D WL)	0.50
S03-7526	75	26	51	25	25	36	M10-1.5	18	12.5	13	12.5	19	5	14	10 ^{H7} (10D IA X	1.10
S03-7536		36	61				X25			18					30LG D WL)	1.21
S03-10036	100	36	71	35	35	45	M10-1.5	22	15	18	15	19	5	20	10 ^{H7} 10D IA X	1.88
S03-10046		46	81				X25			23					30LG D WL)	2.03
S03-12536	125	36	71	45	45	45	M10-1.5	22	20.5	18	20.5	25	5	20	12 ^{H7} 12D IA X	3.10
S03-12546		46	81				X30			23					30LG D WL)	3.34

INCH STANDARD

CODE	A +0.000 -0.0004	B ±0.004	C	D ₁ +0.000 -0.0002	D ₂ +0.0002 -0.0000	E ±0.004	F	G ±0.004	H	J	K	L	M	N	U DIA.	Weight (kg)
S03-1501		.850	1.470							.425					2500	0.31
S03-1502	1.5000	1.350	1.970	.5000	.5000	.870	1/4 -20 x3/4	.281	.281	.675	.281	.620	.19	.310	(1/4D IA x1" LG. DWL)	0.37
S03-2001		.850	1.470							.425					2500	0.41
S03-2002	2.0000	1.350	1.970	.6800	.6800	.870	1/4 -20 x3/4	.375	.375	.675	.375	.620	.19	.310	(1/4D IA x1" LG. DWL)	0.49
S03-3001		.850	1.950							.425					3750	1.03
S03-3002	3.0000	1.350	2.450	1.0000	1.0000	1.370	3/8 -16 x1	.688	.375	.675	.375	.745	.19	.550	(3/8D IA x1-1/4" LG. DWL)	1.18
S03-4001		1.350	2.890							.675					3750	1.95
S03-4002	4.0000	1.850	3.390	1.3750	1.3750	1.870	3/8 -16 x1	.875	.625	.925	.625	.745	.50	.770	(3/8D IA x1-1/4" LG. DWL)	2.15
S03-5001		1.350	2.890							.657					5000	3.67
S03-5002	5.0000	1.850	3.390	1.7500	1.7500	1.870	1/2 -13 x1-1/4	.875	.750	.925	.750	1.120	.50	.770	(1/2D IA x2" LG. DWL)	4.03