



S04 Side Locks with Titanium coated

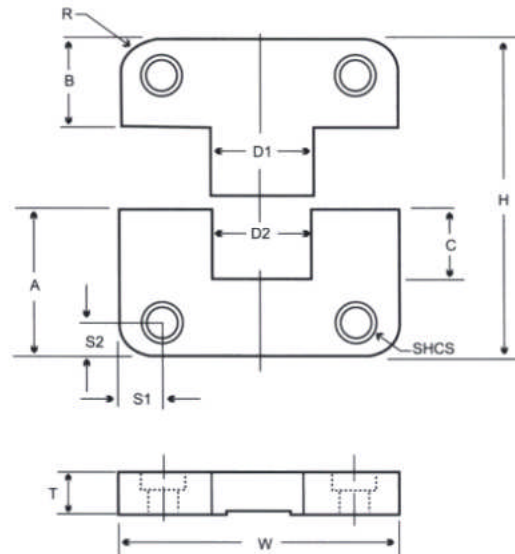
MATERIAL: Tool Steel

HARDNESS:

Male = HRC58+/-2 Black Oxidized

Female = HRC80+/-2 Titanium Nitriding Coated

HOW TO ORDER: use item code below



INCH STANDARD

CODE	W +0.000 -0.004	T +0.00 -0.02	A +0.00 -0.02	B -0.00 +0.02	C	D ₁ +0.000 -0.002	D ₂ +0.002 -0.000	H +0.02 -0.04	R	S1/S2 +0.01 -0.01	SHCS	Weight (kg)
S04-100	1.000	.375	1.125	.875	.53	.500	.500	2.000	.187	.250	#10-32x1/2	0.10
S04-125	1.250	.490	1.125	.875	.66	.500	.500	2.000	.187	.250	#8-32x5/8	0.16
S04-150	1.500	.500	.875	.875	.56	.563	.563	1.750	.187	.250	#8-32x5/8	0.17
S04-200	2.000	.500	1.375	.875	.66	.750	.750	2.250	.187	.312	#10-32x1/2	0.29
S04-300	3.000	.750	1.875	.875	1.13	1.250	1.250	2.750	.250	.375	1/4-20x3/4	0.80
S04-400	4.000	1.000	2.375	1.375	1.25	1.500	1.500	3.750	.500	.500	3/8-16x1	1.93
S04-500	5.000	1.250	2.875	1.375	1.63	2.000	2.000	4.250	.500	.625	1/2-13X1-1/4	3.42
S04-600	6.000	1.500	2.875	1.375	1.75	2.500	2.500	4.250	.500	.625	1/2-13x1-1/2	4.92