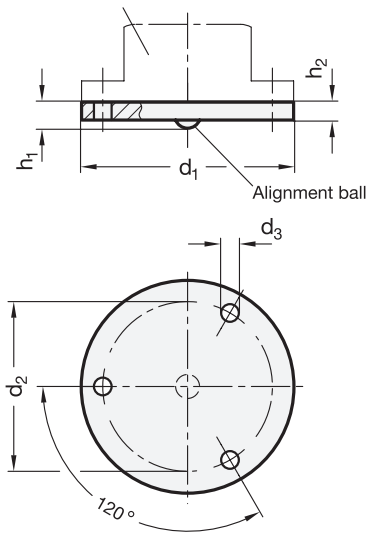


Bull's eye level GN 2277 Type A



ROSTFREI  
Inox  
Stainless  
Steel

<div>2</div> <div><math>d_1</math></div>	$d_2$	$d_3$	$h_1$	$h_2$
20	17	1,8	3,2	1,2
25	21	2,2	3,2	1,2
30	24	3,2	3,2	1,2
40	34,5	3,2	3,2	1,2
50	43	3,2	3,2	1,2

Specification

- Stainless Steel  
AISI 303
  - Stainless Steel characteristics  
→ Main catalogue page 1144
  - RoHS compliant
- 1

NI

Information

Adjustment plates GN 2277.1 are used in combination with bull's eye levels GN 2277, Type A.

The mounting bore holes offset by  $120^\circ$  allow the bull's eye levels and the mounting plate to be aligned in relation to the mounting surface. An alignment ball at the bottom surface of the adjustment plate serves as tilting point. Specific tightening torques of the bolts allow to be achieved, so that the bubble is located inside the marking ring once the horizontal alignment is reached.

see also...

- General information on bull's eye levels and screw-on levels → Page 2
- Bull's eye levels GN 2280 (adjustable) → Page 8

How to order	1	Material
	2	$d_1$

GN2277.1-NI-30